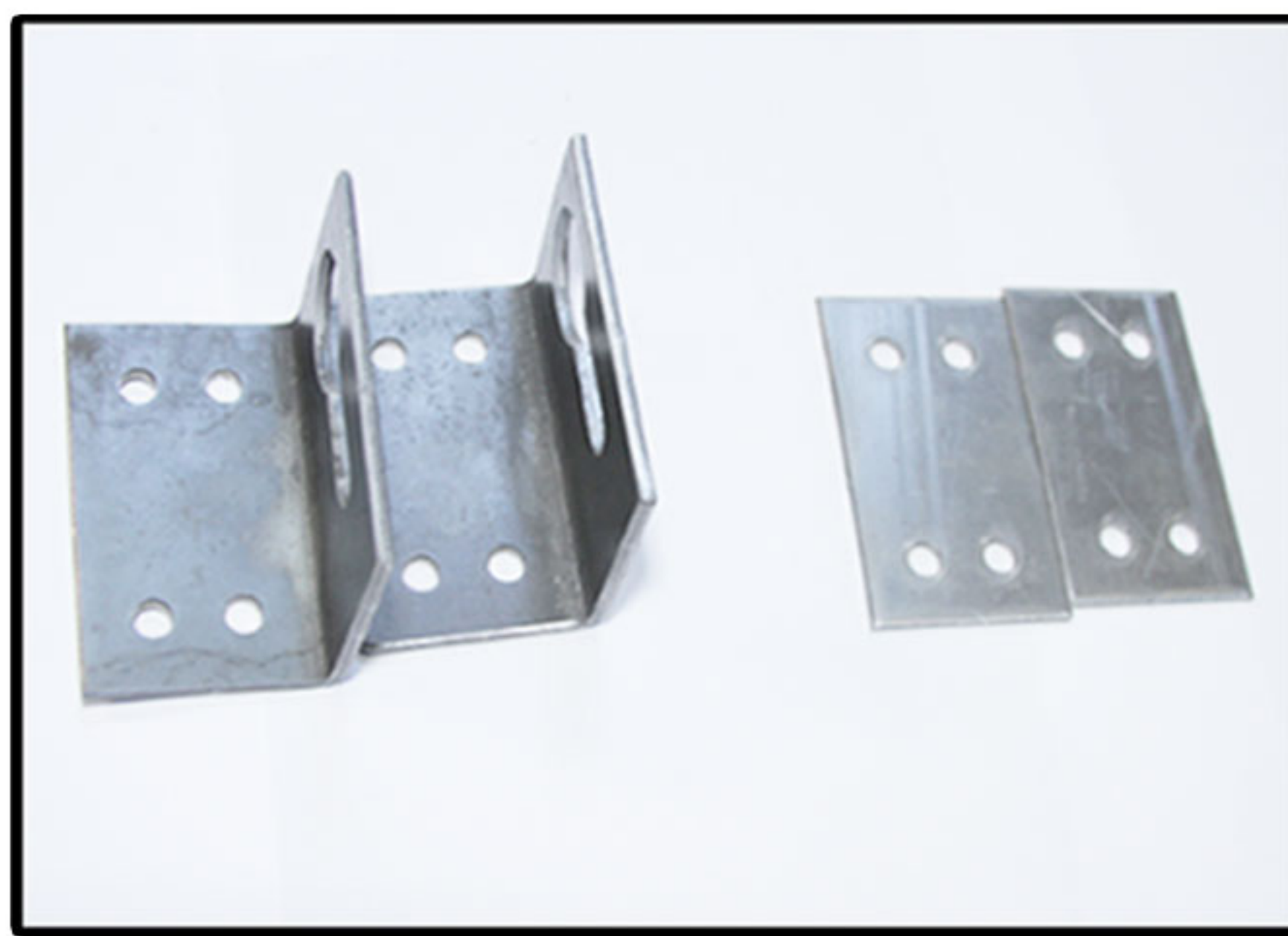




Tremmie Hopper Bracket Assembly Guide



Included Hardware

- (14) 1/4-20 Star Nut
- (8) 1/4-20 Round Head Screw
- (6) 1/4-20 Cap Screw
- (2) Tremmie Bracket Set

To attach the Elephant Trunk (sold separately)

- Insert cap screw to base of Tremmie Hopper, secure cap screw with star. Repete this for all 3 pre-drilled holes



To attach Tremmie Bracket Set

- Line up exterior Tremmie Bracket with the pre-drilled holes on the exterior of the Tremmie Hopper . Insert (4) round head screws into pre-drilled holes for each Tremmie Bracket Set.

To securing Tremmie Bracket Set

- Place the flat bracket to the interior of the Tremmie Hopper. Simply line up with the round head screws and secure with star nut

