

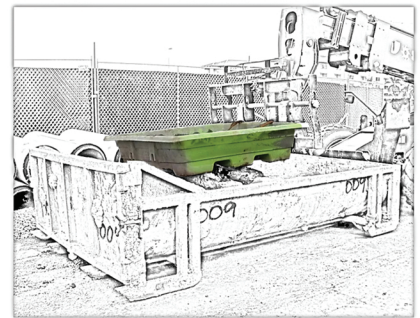
CAT#: WOP-01
CAT#: WOP-02



WASHOUT PAN

The washout pans have been designed to fit in the back of a pickup truck, be handled by one person, and eliminate the use of a release agent for a hassle free clean out. Follow these easy steps for use:

Using the fork pockets molded into the pan, transport the pan to the location you are dumping the material. Place the pan in the location and remove the forks from under the pan.



Put the forks through the attached sling and raise the pan upward. The patented design allows for the pan to lift vertical past 90 degrees to allow for the concrete to be ejected from the pan.



The pans are designed to flex and twist to allow the concrete to separate from the pan. If the concrete is still attached, hit the back with a hammer to release any concrete still attached to the pan.



The lifting strap is only to be used to remove the concrete from the pans. The strap is not to be used to lift by crane or be flown. Any lifting of the pan to an elevated location needs to be done using a forklift and lifting from the bottom of the pans.



 www.deslinc.com
Web

 **800-743-4106**
Phone

 **/DeslauriersInc**
Facebook